

CREATION CLIC SYSTEM²⁸



PUR+



100% Recyclable

FloorScore®

CREATION CLIC 28 is a 6mm Luxury Vinyl Tile (LVT) with a unique patented vertical locking system that installs quickly and easily with little business disruption. The Duo Core construction and fiberglass inner layer provides superior dimensional stability. The tear-resistant design film is protected by a 28 mil transparent wearlayer with a matte finish that doesn't require wax or finishes. Creation Clic 28 is ideal for high traffic commercial applications in education, medical office buildings, grocery and convenient stores.



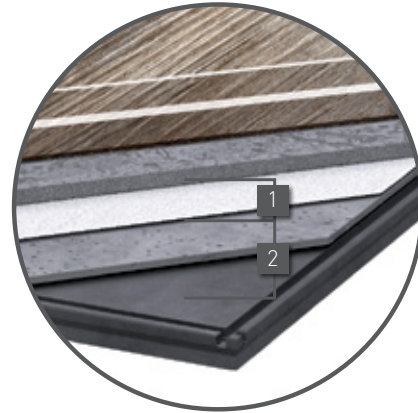
FASTER, EASIER INSTALLATION WITH LITTLE DISRUPTION

- ▶ Faster installation - 17% more square feet per hour compared to Rigid Core
- ▶ Installs over existing surfaces like VCT and ceramic
- ▶ Can be installed with up to 95% RH with Gerfix Spray
- ▶ No need to close the premises, so no loss of revenue



BETTER ACOUSTIC COMFORT

- ▶ 15 dB noise reduction from foot traffic compared to hard surfaces
- ▶ Impact Insulation Class (IIC) attenuation up to 49 dB



DUO CORE® CONSTRUCTION

1 RESILIENT COMFORT CORE



Noise absorption



Soft underfoot

2 DUO CORE® CONSTRUCTION WITH FIBERGLASS MESH



Best dimensional stability



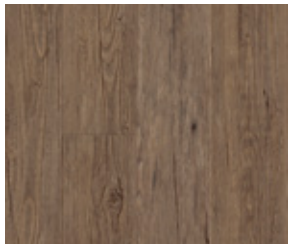
100% WATER RESISTANT



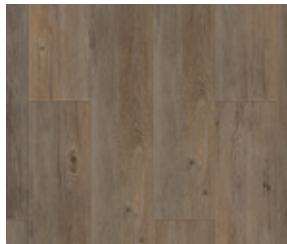
CONTRIBUTES TO LEED CERTIFICATION

- ▶ 100% REACH compliant
- ▶ Extremely low VOC emissions - FloorScore certified and 50x better than industry standards
- ▶ 100% recyclable
- ▶ Contains up to 55% recycled material

PLANKS (8.4"x48.8", *9.52"x57.5")



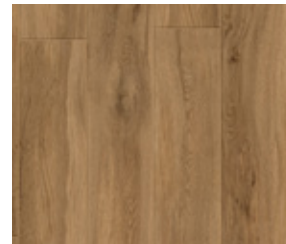
0360 DEEP FOREST



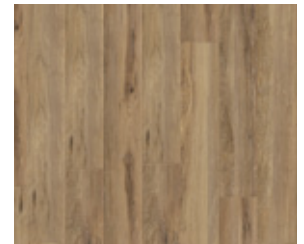
0359 WILD OAK



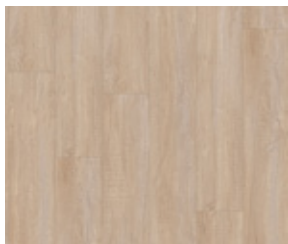
0357 PORTOBELLO



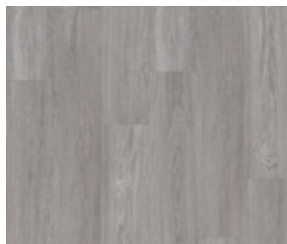
0545 SERENA



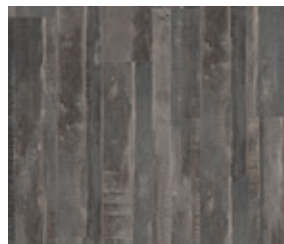
0577 ALBION



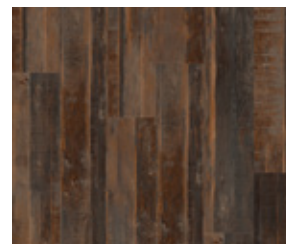
0798 CERVINO
OAK NATURE*



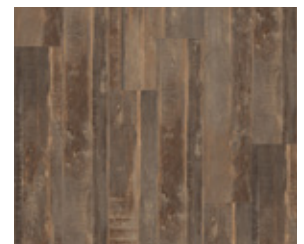
1056 ONKA PEARL*



1053 TOASTED
WOOD ASH*

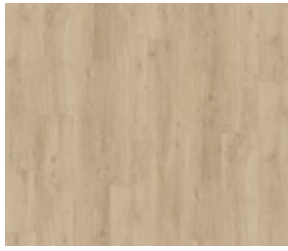


0799 TOASTED WOOD
CAFE*



0800 TOASTED WOOD
ROADSTER*

PLANKS (8.4"x48.8", *9.52"x57.5")



0538 MIDWEST



0797 CERVINO
OAK BEIGE



1050 GRACE
BAY BLACK



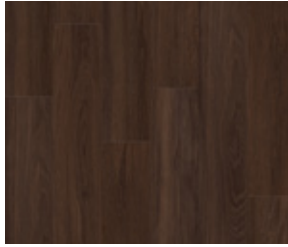
1049 GRACE
BAY CREAM



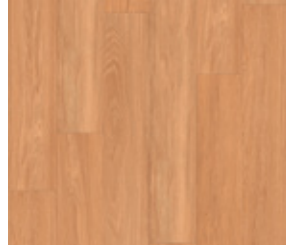
1052 MUSE SAND



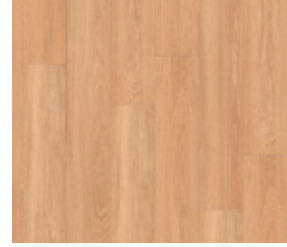
1051 MUSE SMOKED



1057 ONKA COFFEE*



1054 ONKA HONEY*

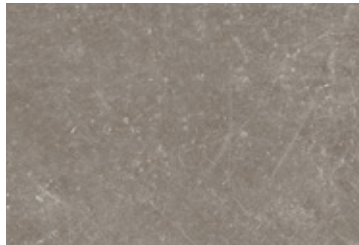


1055 ONKA NATURAL*

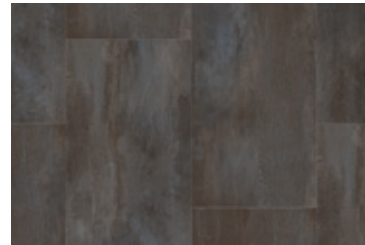
Mineral Section (15.4"x28.7")



0085 DOCK GREY



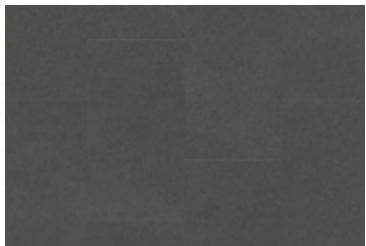
0087 DOCK TAUPE



0089 OXYD IRON



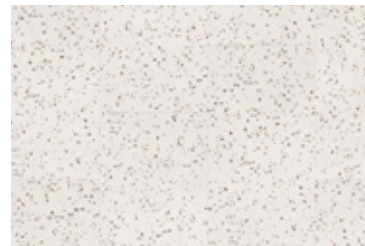
0088 OXYD PURE



1062 PURE
CONCRETE DARK



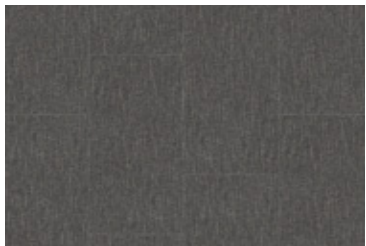
1061 PURE
CONCRETE MEDIUM



1067 TERRAZZO NATURE



1066 TERRAZZO OCRE



1058 GENTLEMAN GREY



1064 PRADO GREEN



1065 PRADO TERRACOTTA

Please see GerflorUSA.com for US Stocking Program

CREATION CLIC²⁸ SYSTEM

DESCRIPTION	STANDARDS	REQUIREMENTS	UNITS	CREATION CLIC 28 (70)
PRODUCT DESCRIPTION				
Reference Specification	ASTM F1700	Class	-	Class III Type B
	ASTM F3261	-	-	Class I Type B Grade 1
Backing	-	-	-	100% Made From Recycled Material Class A per ASTM F3261
Surface Treatment / Maintenance	-	-	-	PUR+ Matte
Gauge Total Thickness	ASTM F386	-	in	0.24 in (6 mm)
Wearlayer Thickness	ASTM F410	-	in	28 mil (0.7 mm)
Plank Size	-	-	ft-in (cm)	8.4" x 48.8" / 9.5" x 57.5" / 15.4" x 28.7" (21.4 x 123.9 / 24.2 x 146.1 / 39.1 x 72.9)
Weight	-	-	lbs/sqf (kg/sqm)	2 lbs/sqf (9.85 kg/sqm)
PERFORMANCE				
Indentation – Residual	ASTM 1914	≤ - 8%	in	< -0.002 in (-0.83%) Meets Requirements under 75 lbs
Static Load (250 psi)	ASTM F970	≤ 0.005 in	in	Meets Requirements
Flexibility	ASTM F137	> 1.5 in	in	Meets Requirements
Resistance to Heat	ASTM F1514	ΔE≤8	-	Meets Requirements
Resistance to Light	ASTM F1515	ΔE≤8	-	Meets Requirements
Coefficient of Friction	ASTM D2047	-	-	0.65 (Dry) / 0.55 (Wet)
Dimensional Stability	-	< 0.02 in	-	Meets Requirements
Impact Insulation Class (IIC)	ASTM E989 (ASTM E492)	-	dB	49 dB
European Impact Sound Insulation	EN ISO 717-2	-	dB	5 dB
European Room Impact Walking Noise	NF S 31074	-	dB	72 dB
Thermal Conductivity	EN 12 524	-	W/(m.K)	Excellent
Chemical & Stain Resistance (5 min and 24 hrs)	ASTM F925	-	-	Excellent
Fire Rating	ASTM E648	Class I	Class	Class I
Smoke Density (Flaming and Non-Flaming)	ASTM E662	-	-	Meets Requirements
Fire Rating Canada	CAN/ULC S102.2	-	-	Meets Requirements
ENVIRONMENT HEALTH & SAFETY				
Naturally Bacteriostatic: Combats MRSA, E. Coli, and S. Aureus*	ISO 22196	-	-	Inhibits Spread of Infection at 99%
Allergen-Free	-	-	-	OK
Plant Certifications	ISO 14001, ISO 9001	-	-	Certified
Production Waste	LEED v4 MRc3	-	-	100% Manufacturing Waste Recycled
End of Life	-	-	-	100% Recyclable
MATERIALS & RESOURCES: BUILDING PRODUCT DISCLOSURE & OPTIMIZATION (BPDO)				
Environmental Product Declaration (EPD)	LEED v4 MR BPDO	1 Product	-	Product-Specific Third Party Verified Type III
Health Product Declaration (HPD v2.1)	LEED v4 MR BPDO	-	-	Self-Declared
Sourcing of Raw Materials: Recycled Content	LEED v3 MRv4	Contributes	-	55%
	LEED v4 MR BPDO			
Restriction Use of Harmful Chemicals	LEED v4 MR BPDO	Contributes for International Projects	-	100% REACH Compliant
MATERIALS & RESOURCES: INDOOR ENVIRONMENTAL QUALITY (IEQ)				
Indoor Air Quality / Low Emitting Materials	LEED v3 IEQc4.3 LEED v4 IEQ	Contributes	-	FloorScore®
TVOC After 28 Days	ISO 16000-6	-	-	< 10 µg/m ³
WARRANTY	10-year limited manufacturer warranty when installed in accordance with Gerflor's installation instructions available on gerflorusa.com.			

*The best defense against the spread of infections is the implementation of an effective cleaning method.

CREATION CLIC PACKAGING DETAILS							
	FORMAT OF PLANKS / TILES		NUMBER OF UNITS PER BOX	COVERAGE PER BOX		WEIGHT / BOX	
	CM	INCH		SQM	SQF	KG	LBS
CREATION CLIC 28	21.4 x 123.9	8.42" x 48.77"	6	1.59	17.11	17	27
	24.2 x 146.1	9.52" x 57.52"	5	1.77	19.05	18	41
	39.1 x 72.9	15.39" x 28.7"	5	1.43	15.39	15	33



**NO heavy metals,
CMR 1, or CMR 2**

