

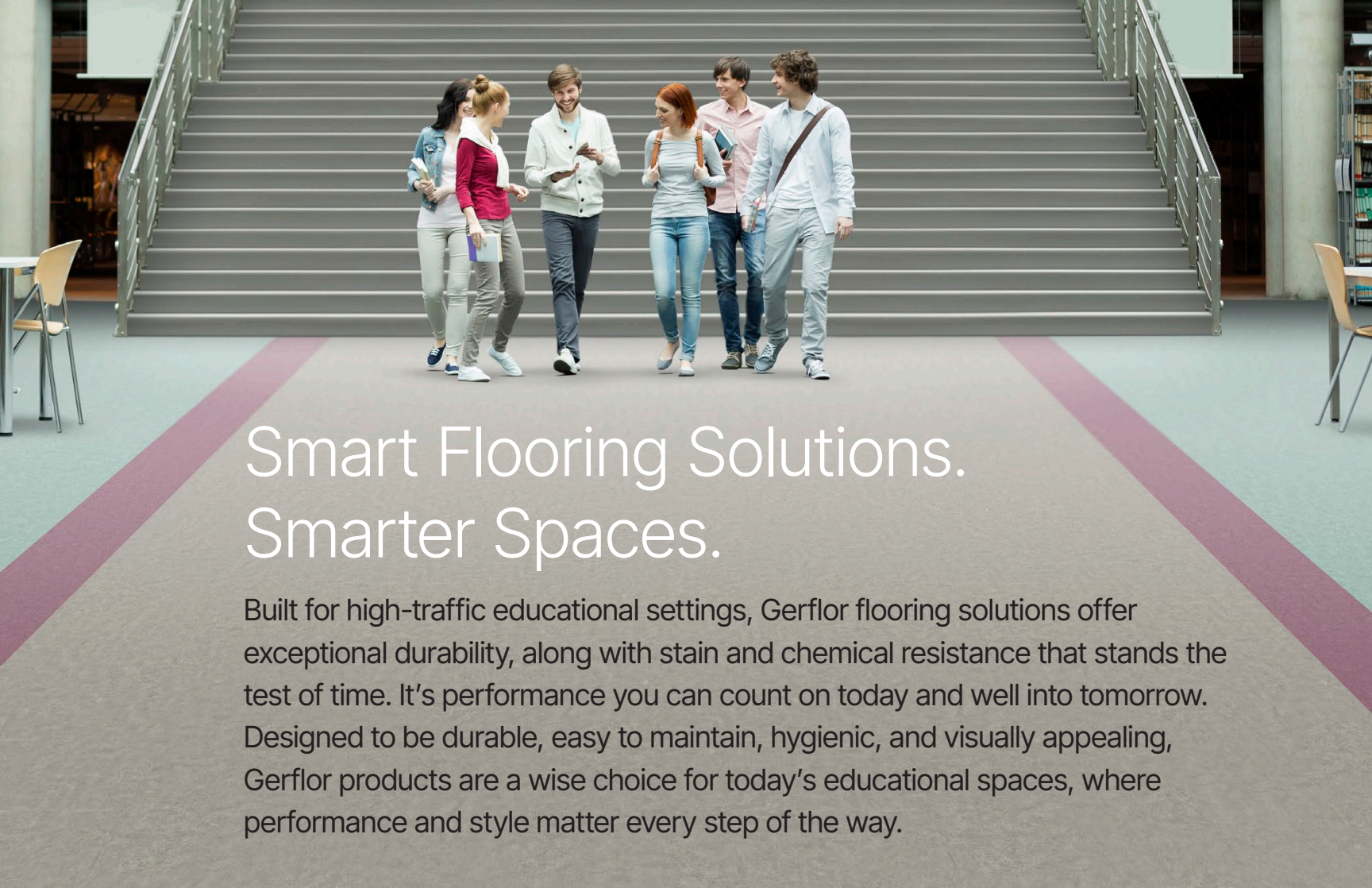


**Gerflor®**

**EDUCATION**

Solutions for Every Education Space





# Smart Flooring Solutions. Smarter Spaces.

Built for high-traffic educational settings, Gerflor flooring solutions offer exceptional durability, along with stain and chemical resistance that stands the test of time. It's performance you can count on today and well into tomorrow. Designed to be durable, easy to maintain, hygienic, and visually appealing, Gerflor products are a wise choice for today's educational spaces, where performance and style matter every step of the way.



INTERLOCKING FLOOR TILES

## Fast Renovations. Lasting Performance.

Interlocking Modular Tiles install quickly over existing or uneven subfloors. Perfect for renovations, they reduce downtime, cut labor costs, and deliver a seamless look with a no-wax-for-life surface. Ideal for busy education spaces when time and budgets are tight.



LINOLEUM FLOORING

## Naturally Durable. Sustainably Made.

Crafted from 76% rapidly renewable materials, our linoleum is a sustainable choice for education spaces. Durable, low-maintenance, and cost-effective, it stands up to daily use. The Neocare™ surface resists scratches and chemicals, extending its lifespan. As a Cradle to Cradle Certified® product, it meets top global standards for safety and circular design.

MULTI-PURPOSE SPORTS FLOORING

## Durability Meets Versatility. Active Spaces Meet Their Match.

The Recreation Collection is built for multi-use spaces like gyms, cafeterias, and auditoriums. It supports active play while resisting stains and indentation from tables and chairs. Offering noise control and lasting durability, it's the ideal floor for high-traffic, high-energy environments.



LVT

## Durable Design. Minimal Downtime.

Gerflor's LVT flooring delivers exceptional flexibility and design versatility, making it the perfect solution for fast-paced school renovations. Blending style and durability, our LVT floors provide a seamless installation experience and long-lasting performance that stands up to daily wear.

## TARAFLEX®

— SPORTS FLOORING —

## Engineered for Safety. Built for Champions.

Engineered for performance, Taraflex® Sports Flooring offers advanced shock absorption to protect athletes and reduce injury risk. Its no-wax-for-life surface makes maintenance easy and lowers total cost of ownership. With a 20+ year lifespan and permanent or portable options, Taraflex is a trusted choice for all athletic spaces.

### Key benefits:

- Reduces friction burns for safer dives and slides
- Superior shock absorption to ease joint strain
- Seamless surface for consistent play
- Players stay protected and confident with every move



Official Supplier for volleyball at every Summer Olympics since Montreal in 1976



The Official Championship Court for NCAA® Division I Volleyball and is played on by over 130 NCAA® D1 volleyball teams



Taraflex® is an awarded supplier for **Sourcewell**, an autonomous government organization dedicated to helping communities for over 40 years. Sourcewell streamlines procurement for government and education entities through competitively solicited national contracts, providing high-quality solutions tailored to local needs.



As an approved **Equalis** vendor, Gerflor enables school districts to purchase flooring solutions without complex bidding—saving time, ensuring compliance, and refocusing efforts on education.

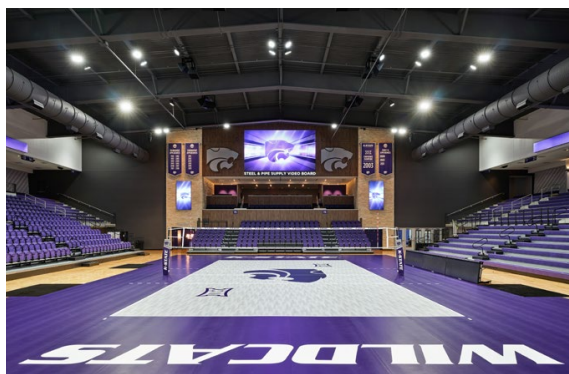




# Gerflor Educational Flooring Solutions

## Health & Wellness Matter.

Designed for student and faculty safety, FloorScore® certified floors emit low VOCs to promote healthier indoor air quality. Manufactured in ISO-certified facilities and third-party validated, they help inhibit virus and bacteria growth, supporting safer learning and play environments.

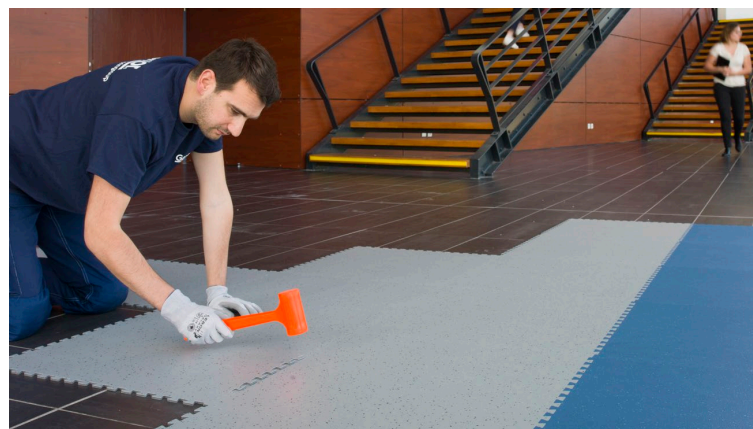


## High-Performance Solutions. Versatile Applications.

A functional, productive campus needs flooring that performs. From shock-absorbing, energy-returning surfaces in athletic facilities to seamless, hygienic floors and walls for labs and clinics, these solutions are built for durability and cleanliness. With versatile products and quick-install tiles, they support fast renovations that minimize downtime and keep your campus moving forward.

## Expert Support. Every Step of the Way.

You can rely on an entire team of dedicated experts with deep technical knowledge and design insight. We collaborate with athletic directors, facility managers, architects, and designers to ensure every space is planned, installed, and maintained to the highest standards. When performance matters, trust unparalleled support to build better learning environments.



Explore Gerflor's full range of education  
solutions at [gerflorusa.com](https://www.gerflorusa.com).

